



Digital Satellite Finder
VF-8900



USER'S MANUAL

FindSAT ~ The Best SAT Finder

1. Introduction

Digital Satellite Finder provides a simple and convenient solution for setting up satellite dishes. Using the programmed satellite parameters, you can quickly, easily and accurately align any satellite dish.

2. Accessories

Below items are included in retail box:



Adaptor



Connector



Hook

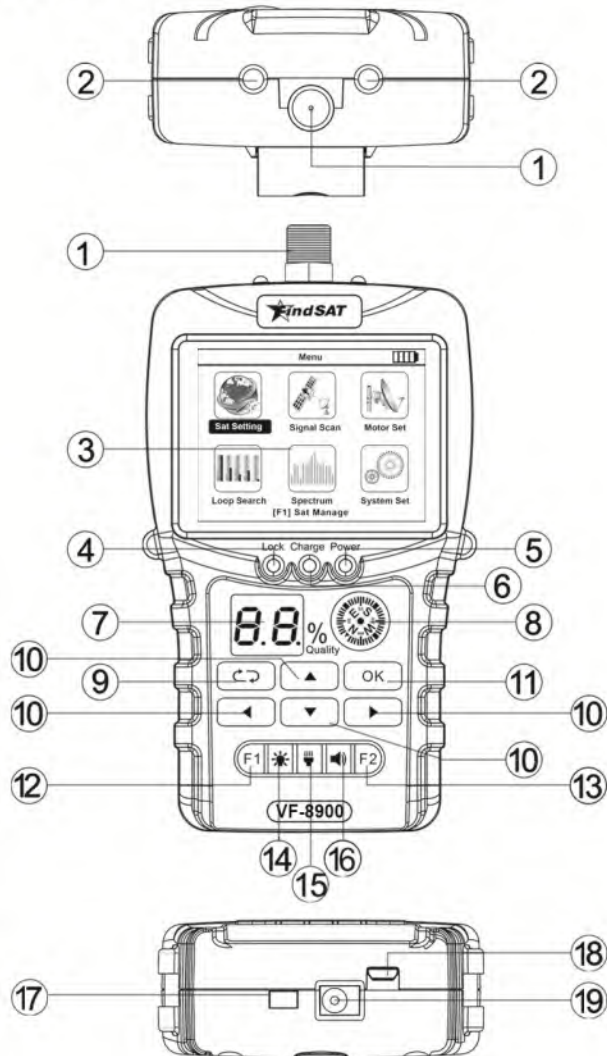


Strap



USB Adaptor

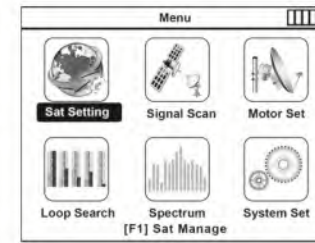
3.Function



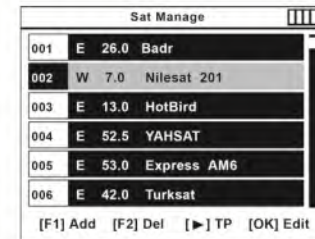
- (1) LNB Input
- (2) Flashlights
- (3) LCD Screen
- (4) Signal lock indication and LNB output short circuit indication
 - 1) Normal light indicates signal lock status
 - 2) Blinking light indicates LNB output short circuit
- (5) The Power Indicator
 - 1) Normal light: Power on State
 - 2) Blinking: The battery is low, prompting the user to charge
- (6) Charge Indicator
 - 1) Steady Red Light: Charging
 - 2) Steady Green Light: Fully Charged
 - 3) Red and Green Flash Simultaneously: Battery Problem
- (7) Signal Quality Percentage Display
- (8) Compass
- (9) Return Key
Return to the Previous Menu

- (10) **Arrow Key**
Up, down, left, and right buttons, operate the buttons to move the cursor up, down, left, and right
- (11) **OK Key**
Confirm Current Operation
- (12) **F1**
Function Button
- (13) **F2**
Function Button
- (14) **On/Off key's background light**
- (15) **Flashlight light switch**
- (16) **Signal lock tone key**
- (17) **Power Switch**
- (18) **USB updata**
Can update SW/ TP/Satellites list
- (19) **DC In port**

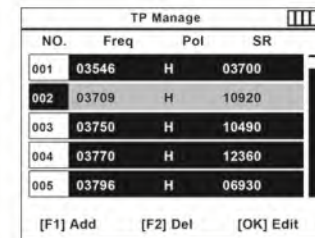
4 THE MENU OPERA TION



*Main Interface, Press ▲/▼ ◀/▶ to choose the Items, Choose Items Press "OK", Press ↻ key will back to the Main Interface.
Press F1 to sat manage

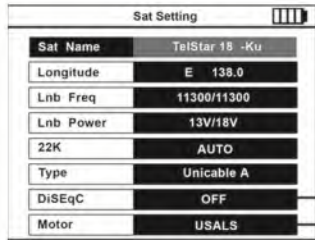


*Satellite management



*TP management

06 USER'S MANUAL

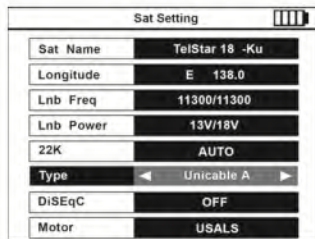


*Sat Setting Interface, you can change the data information by ▲/▼ keys.

DiSEqC1.0(1-4) / OFF / DiSEqC1.1 (1-16)
 OFF / USUAL / DiSEqC1.2



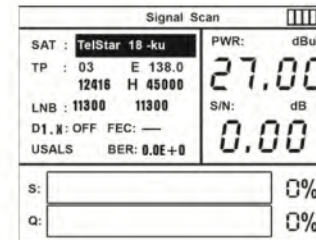
*Changed data information, Press Return key will showing save option Yes / No.



*Type:DiSEqC / Unicable A/Unicable B

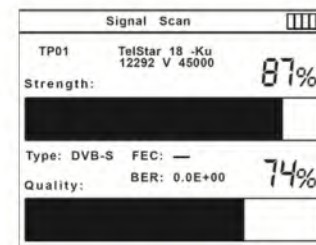
* Unicable A and Unicable B Support working with Scr/Dess LNB.

07 USER'S MANUAL

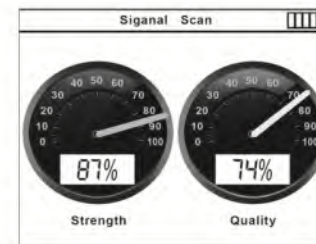


*Signal Scan showing Signal information, you can use ◀/▶ key to select the Items

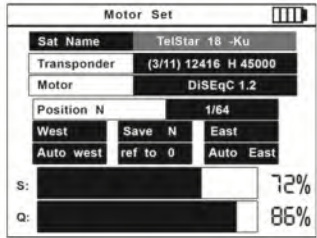
*Press F1 for Sat Setting



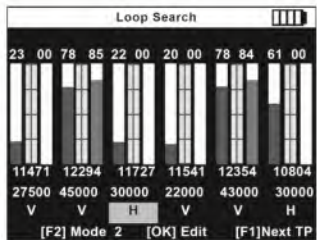
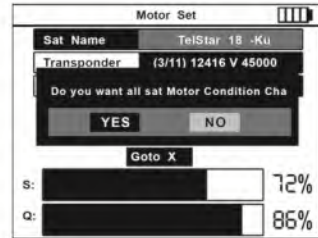
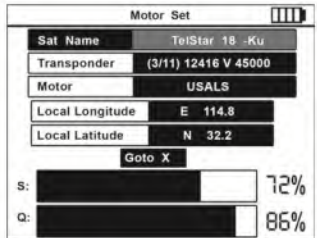
*Press OK key can showing the following information



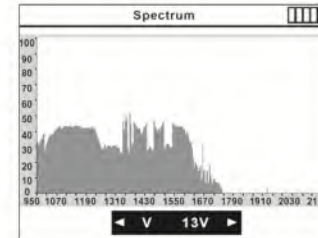
*Press OK key can showing the following information



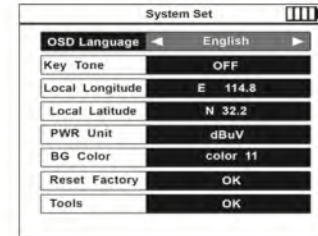
- * Motor control interface, support DisEqc 1.2 /USALS control motor
- * Press F1 to swith USALS/DiS Lqc 1.2/OFF
- * Press ◀▶ Left / Right keys to switch last and next page of sa tellite List
- * Press F2 to make all sat mot or Condition Change



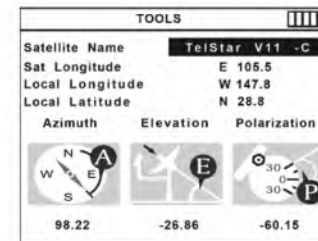
- *Group TP Freq search , TP Freq Eidt
- * Press F2 to switch / mode 1 and mode 2



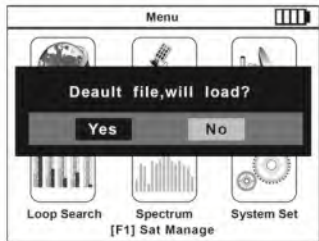
- *The spectrum shows that in the 950-2150 mid band, the overall condition of the signal is shown.



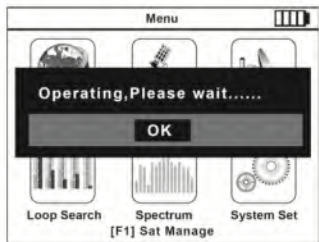
- * System settings, set as needed Sw version and date



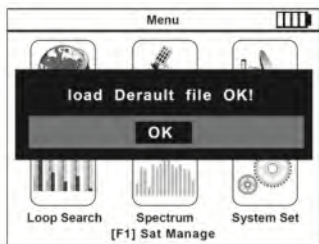
- *In Tools, press OK to enter the satellite tool interface



*USB default default satellite parameters



*Updating the default satellite parameters, do not power off, do not unplug the U disk



*Update is complete,you can unplug the U disk

5. Main Features

- ★ 2.4" TFT Color LCD Screen, Support better resolution .
- ★ Fully Support DVB-S/DVB-S2、MPEG2/MPEG4 Compliant
- ★ Support Spectrum Function
- ★ Support Motor Set and antenna motor control --DiSEQC 1.2 / USALS/OFF
- ★ Support Loop Search functions
- ★ Support multiple OSD languages
- ★ Support 11kinds of OSD interface color selection
- ★ Support DISEQC 1.0 / 1.1 / 1.2,0 / USALS 22khz Tone
- ★ Test Content: Signal Strength , Quality , BER, PWR, SNR etc
- ★ LNB short-circuit protection and indicator
- ★ Support low-voltage charging, can automatically wake up the sleep Battery
- ★ Fast charging Li-ion battery , Ultra-long standby, low power consumption
- ★ With LED high brightness lighting
- ★ With Backlit Keys (On/Off)
- ★ With Compass and Power Switch
- ★ Edit Transponder : Edit , Add and Delete .
- ★ SW update by Micro USB
- ★ Support Speical tool for customers to Edit TP /Satellite list by themselves, then bring new Bin SW and upgrade SW by themselves .

6. Technical Specifications

- ★ Audio alarm indicates signal intensity level
- ★ Signal lock audible notification: On/Off
- ★ LNB short-circuit protection and indicator
- ★ Ultra-long standby, low power consumption
- ★ Power-supply: 12V, 1000 mA
- ★ Fast charging Li-ion battery can last around 5 hours
- ★ Input frequency: 950 ~ 2150MHz
- ★ Input impedance: 75Ω
- ★ Power output: 13/18V, 350mA
- ★ Selectable Ku/C-band
- ★ Graphic and digit intuitive display
- ★ Backlit KeysCar charger
- ★ 2.4" TFT Color LCD
- ★ Min. level in: - 35dBuV (noise)
- ★ Max. level in: ~ 90dBuV
- ★ Signal Quality Percentage
- ★ Compass

